



FRACTAL FACADES
LIGHTING SOLUTIONS



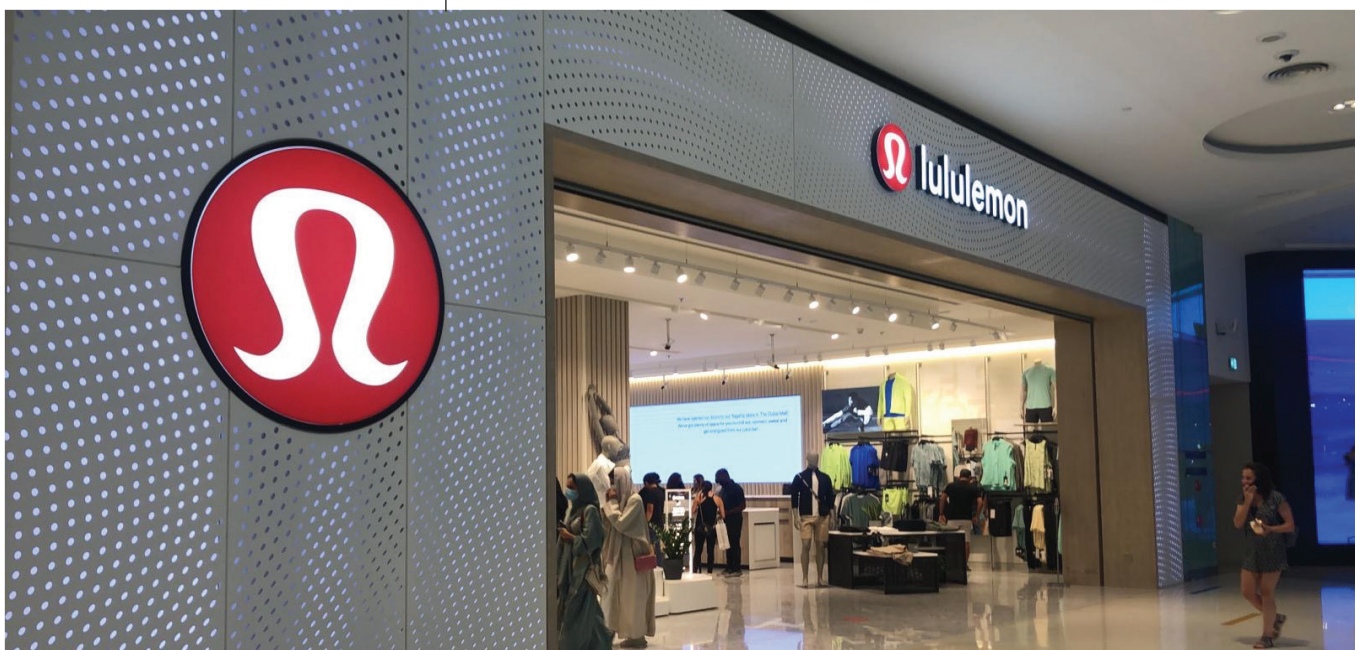
PROJECT PORTFOLIO

INNOVATIVE
CREATIVE
UNIQUE

RETAIL SHOP FRONT LIGHTING



Lululemon sells its products internationally in 491 stores as well as online. Fractal was commissioned to supply and install **960m** of led strips for the facade on the store front in Dubai Mall. Furthermore, the programming of the LEDs to create an elegant display of sparkling patterns on the facade was also done.



BUILDING FACADE LIGHTING



The project comprised of **LED Facade and Roof Lighting Solutions** for Dubai Chamber Head Office located in Deira Dubai along the Dubai Creek.



The project indeed holds a special place in the entire fractal family as it marks the beginning of a new era of milestones for Fractal.



Scan for
work in progress
video

Fractal Systems provided a permanent outdoor lighting solution with **10 years warranty** on the hardware installation.

2660

meters long
Facade LED

4717

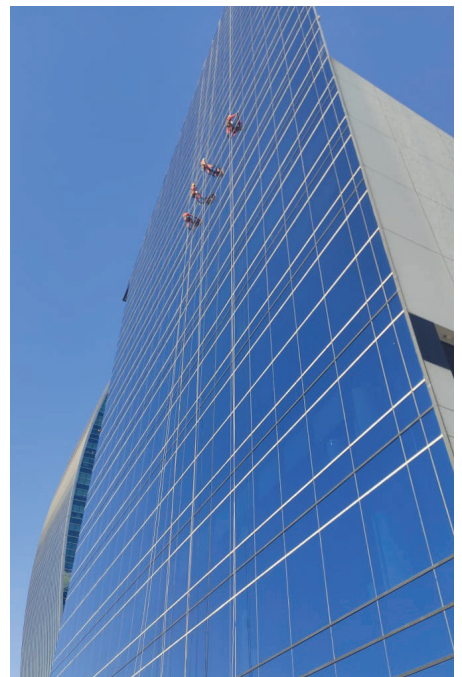
meters of
power cables

5388

Pixel dot
roof LED

6824

meters of
data cables



BUILDING FACADE LIGHTING

We specialize in LED Lighting Solutions custom made to fit our customer needs.

Fractal Systems designed and manufactured **Custom** LED Mounting Profiles, Structures and Cable Trays to have the lights and cables expertly concealed into the building's existing facade.

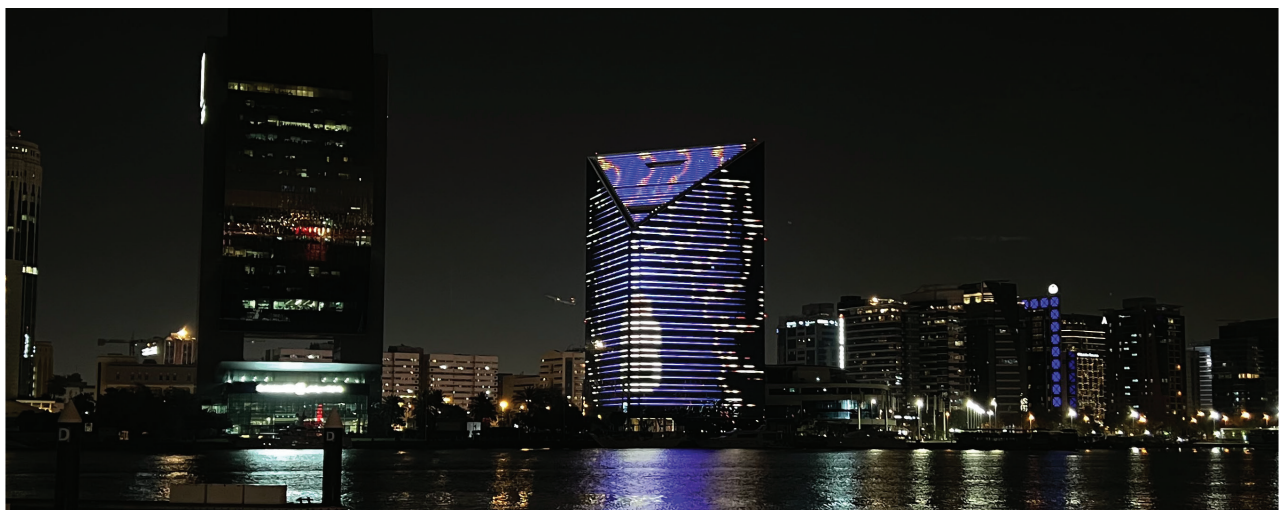


We deliver **Turnkey Lighting Solutions** as a result of numerous partnerships with industry leading brands which saves the customer from all the hassle.

Fractal Systems also offers Long-Term **Maintenance Contracts** to make sure our customers enjoy a seamless experience with our technology installations.



Over **10 kms** of cabling was completed with more than **700** different **Waterproof Connections**, custom cable management and data routing infrastructure was developed.

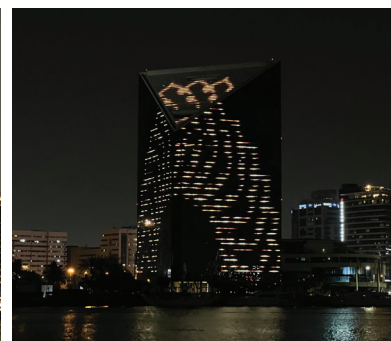
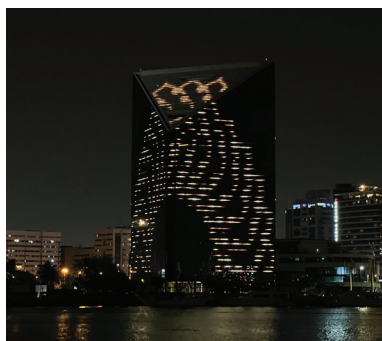
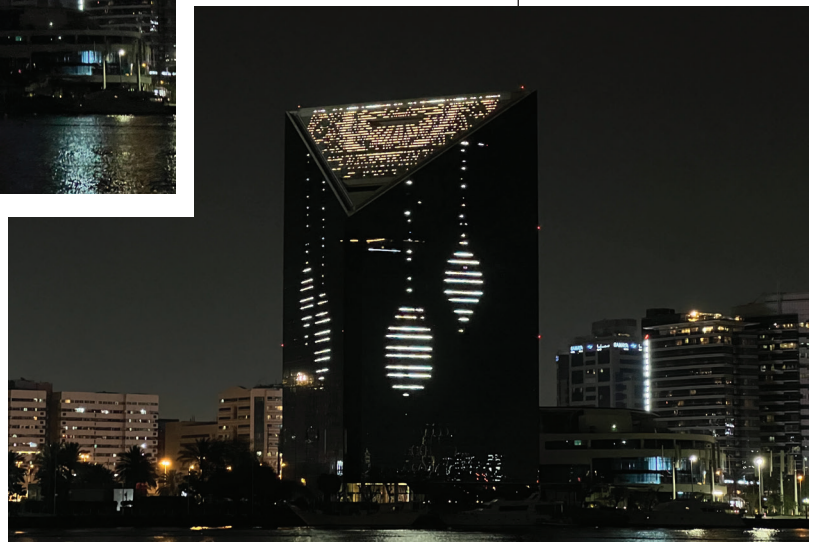




Scan for
completed project
video



Fractal Systems offered a
**Comprehensive Internal
Wiring**, cable containment and
electrical modification solution to
allow smooth operation and
maintenance of the lighting systems



We also provide custom
Content Creation and
Programming Solutions,
allowing the hardware to be
used to its highest potential



ARTISTIC OUTRDOOR LIGHTING DESIGN

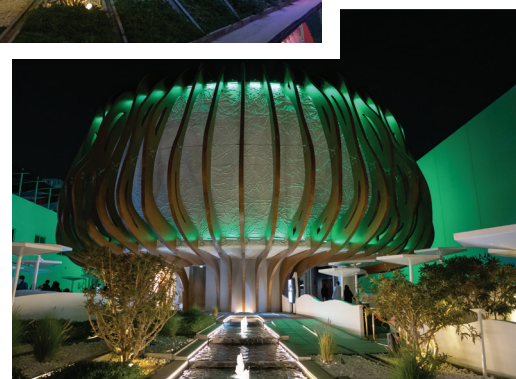
Fractal provides comprehensive **turnkey lighting solutions**. From installation of lights to programming and content scenarios to post completion maintenance contracts, we do it all.



Fractal deployed its team of experts for **Programming and Content Scenarios** of the outdoor lighting on Oman Pavilion in EXPO 2020.



Scan for
completed project
video

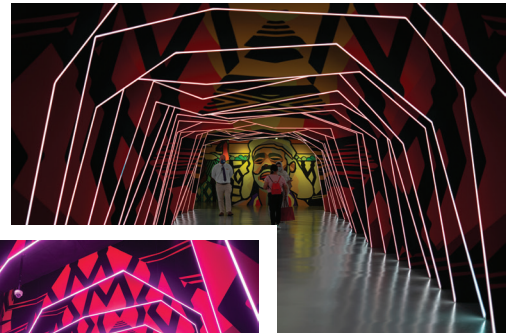


ARTISTIC OUTRDOOR LIGHTING DESIGN



Fractal provides **indoors and outdoors** lighting solutions tailor-made to match the requirements of our clients.

Immersive walk way lined with LED lights to create an ambience to capture the heritage of caves of Australia at the Australian Pavilion at EXPO 2020.



EXPO

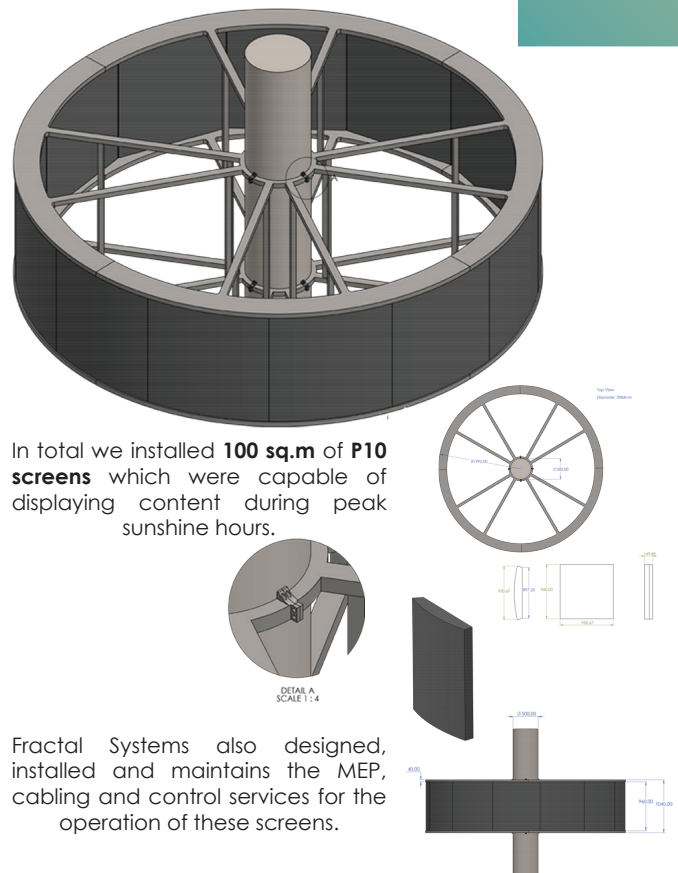
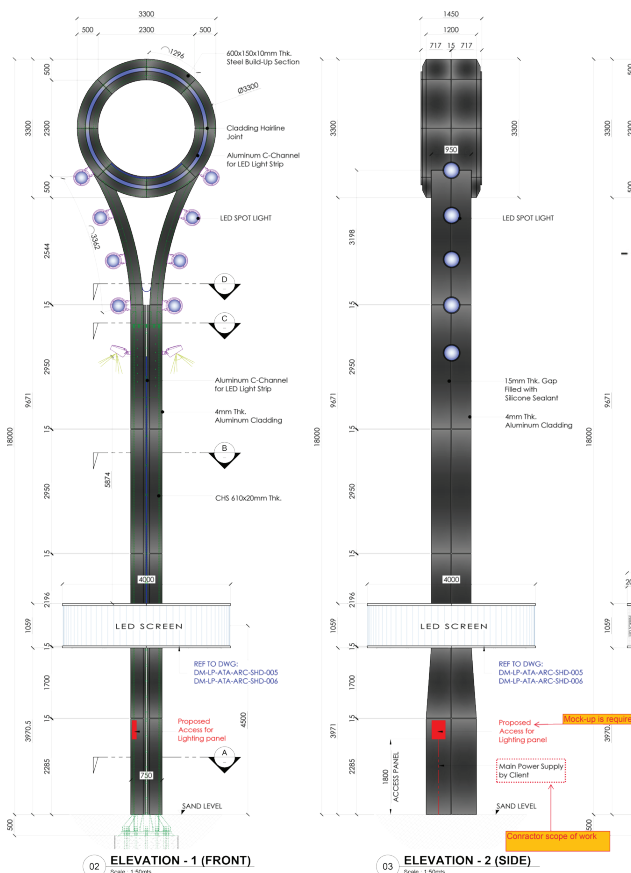
DUBAI MUNICIPALITY LIGHT POLE

Fractal Systems was responsible to engineer a solution to install a custom built circular LED display system to display real time information for beach visitors.

We handled the design and fabrication of the mounting system, the supply of the custom LED, the installation of the structure and LED and the content management system which included real time content update and remote play capabilities.

7 identical poles were installed across 3 major beaches along the Jumeirah coastline to light up the swimming areas for night access.

The installation was completed within **4 weeks**.



INDOOR AND OUTDOOR LED INSTALLATIONS

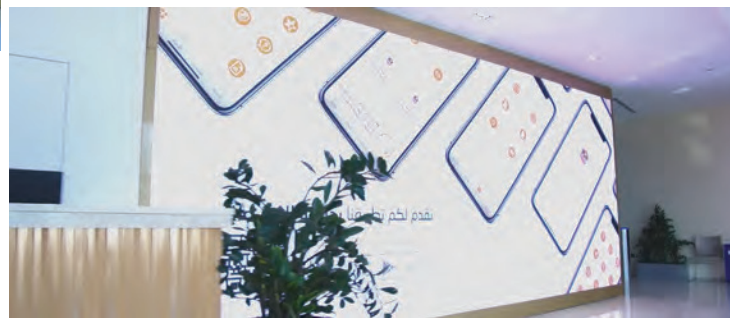
We specialize in LED Display installation for both indoor and outdoor use.

We handle the full project delivery starting from the technical study & design, all the way until the execution & operation of these Displays.

Each LED Display is customized depending on the client's needs & requirements. Another vital part of our work is development of the Content that appears on the LED Displays.



Fractal Systems delivered a **42 SQM** LED Display for the Ministry of Climate Change and Environment Head Office.



Fractal offers a turnkey solution making us a unique partner in the Digital Signage industry. The installation is divided into two **7m x 2m** LED P4mm Indoor Displays placed inside the building lobby.



A massive **15.5m x 6.6m** Outdoor LED P16mm installation for Fujairah Mall. This impressive LED Display is perfect for installation Outdoors as it is heavy-duty, climate resistant, and extremely bright allowing for viewing from a long distance.



SUPPLIERS LIST

 **Signify**

iGuzzini

PHILIPS

OSRAM

 **SWITCH
MADE**
LED SOLUTIONS

181 | oneeighty
one.com

 **COLOR KINETICS**

Martin
Professional Middle East

 **linea
light**
group

Studio Due[®]
 emotion and creativity in light

ASM[®]

INFiLED

Abzen

LiteMagic



FRACTAL FACADES
L I G H T I N G S O L U T I O N S



Phone: +971 4 422 7929
C49, Dubai Production City,
United Arab Emirates